

## Simple installation: Schüco BlueCon app

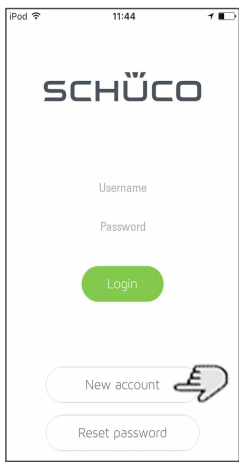


Please download the Schüco BlueCon app from the App Store and open it on your smartphone.

### Step 1: Creating a user account

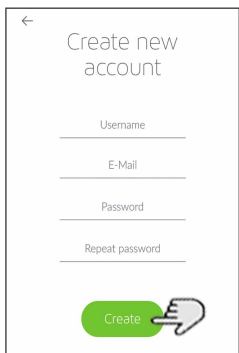
When using the app for the first time, please create your own user account so you can install your own locks.

**Note:** In order to operate or install locks, Bluetooth must be activated on your smartphone and you must have an internet connection.



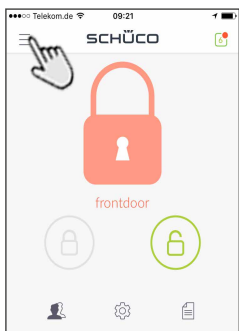
### Step 2: New account

Tap "New account". A screen appears with the "Create new account" entry field. Please complete the "Username", "E-mail" and "Password" fields.



### Step 3: Registration

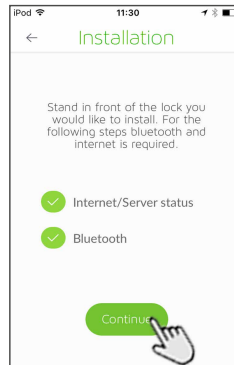
Tap "Create". Your user account is created and the lock screen appears.



### Step 4: Installing the lock

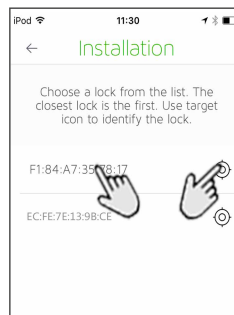
In the app, tap the three bars in the top left and select "Install lock" from the pop-up menu.

**Note:** In order to obtain a good Bluetooth connection, stand near the Schüco BlueCon module that is to be installed. The display will show whether the app is connected to the server and Bluetooth is active.



### Step 5: Continue

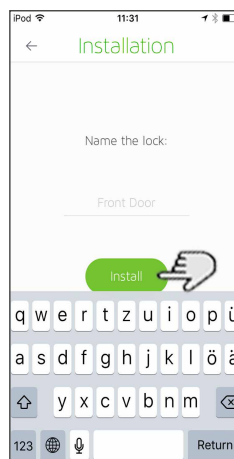
Tap "Continue". A list of all Schüco BlueCon modules within the Bluetooth range is shown.



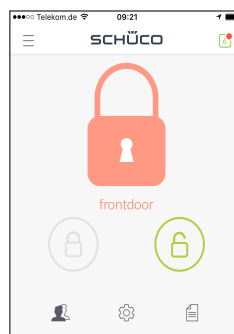
**Note:** You can tag modules in the list by tapping the cross-hair pointer. The LED on the bottom of the module flashes.

### Step 6: Installation

Tap on the number to select the module for installation. The "Installation" screen appears.



Name the lock and tap "Install".



Following successful installation, you will be taken back to the lock screen. You can now open and close the lock by means of the small circles on the right and left at the bottom.

**Note:** When the Schüco BlueCon module is delivered, the relay switching time is one second. This is suitable for the most common operations. If the device to be controlled requires a different switching time, please set it before you operate the lock.