

Aluminium-Rollladensysteme

Aluminium roller shutter systems

Extrem leise.

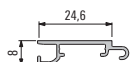
In erster Linie sollen Roll-laden leichtläufig und fast geräuschlos sein. Diese Anforderungen werden dank speziell entwickelter Technik und Mechanik vollends erfüllt, sowohl beim vertikalen wie horizontalen Lauf.

Exceedingly quiet.

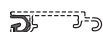
First and foremost, roller shutters should run smoothly and be almost silent. These requirements are met in full thanks to specially developed technology and mechanics for both vertical and horizontal operation.



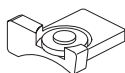
Mattenaufbau Set design



Lamellenprofil
902 329 glatt
Roller shutter profile
902 329 smooth



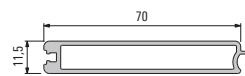
Aufnahmepprofil
650 088
Retaining profile
650 088



Lamellen-Endkappe
565 907.05 links
565 907.06 rechts
Laufrolle für Endkappe
551 257

End cap
565 907.05 left
565 907.06 right
Roller for end cap
551 257

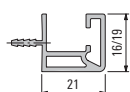
Endprofil End profile



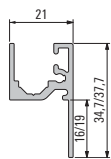
Endprofil 12
902 290
Endkappe für Profil
902 290
551 947.03 rechts
551 947.04 links

End profile 12
902 290
End cap for profile
902 290
551 947.03 right
551 947.04 left

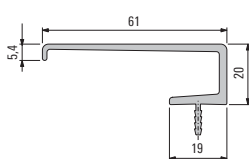
Korpuszubehör Unit accessories



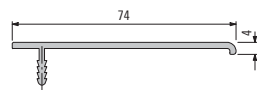
Korpusführungsprofil
für Gewichts-ausgleich
16/19 mm Korpusseite
925 057 (für 16 mm)
925 079 (für 19 mm)
Guide profile for
counterbalance
16/19 mm carcass side
925 057 (for 16 mm)
925 079 (for 19 mm)



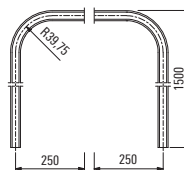
Korpusführungsprofil
für Federmechanik
19 mm Korpusseite
925 063
Guide profile for spring
mechanism
19 mm carcass side
925 063



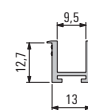
Blendprofil 925 062
Cover profile 925 062



Blendprofil 921 080
Cover profile 921 080



Kunststoff-Führungsprofil
gebogen
Set (re./li.)
532 507
PVC-U guide profile,
arched
kit (right/left)
532 507



KS-Führungschiene
650 079
PVC-U guide track
650 079



Abdeckkappe für
Korpusführungsprofil
(925 079)
552 677.03 links
552 677.04 rechts
Cover cap for
guide profile
(925 079)
552 677.03 left
552 677.04 right