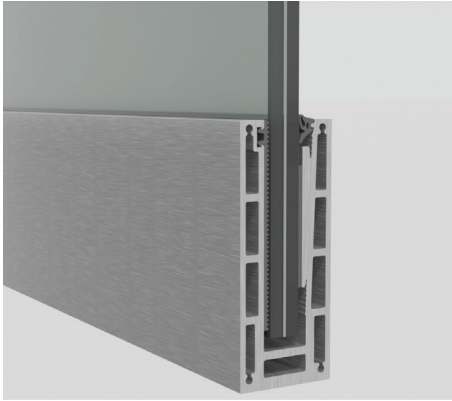
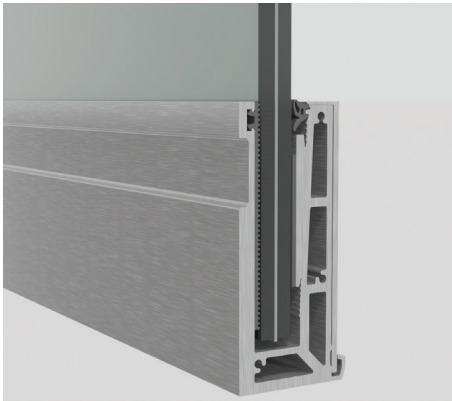


SCHÜCO

Schueco railing system
GR 52 | GR 58



Floor mounted railing



Wall mounted railing

Schueco railing system GR 52 | GR 58

The new Schueco railing system combines aesthetics, quality, minimalist design and safety, making it an excellent choice. This system combines the elegance and visual appeal of an all-glass solution with simple fabrication and installation. It also provides maximum protection as a safety barrier. The sturdy profiles and connections ensure the necessary safety for internal and external applications.

Minimalistic design

With less number of components, this system has a minimalistic design while serving the necessary function.

Tested for safety

All variants of this system have been third-party tested to provide maximum safety and assurance of reliability to the occupant.

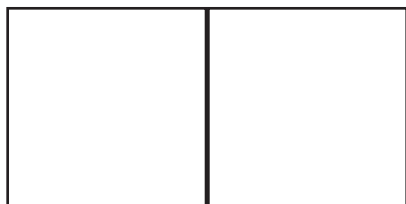
Code-compliance

The system has been designed and tested to ensure compliance with local building codes.

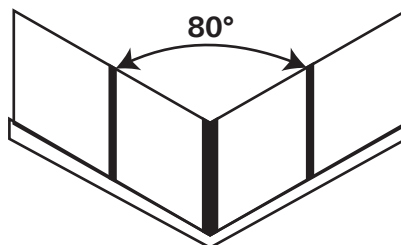
Offerings

This system fulfils all the needs of a glass railing, with the options of floor-mounted, face-fitted versions that can be used for straight and corner solutions.

Design typology



Straight railing



Corner railing

System data

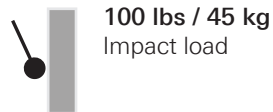
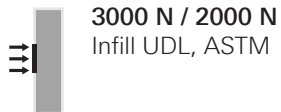
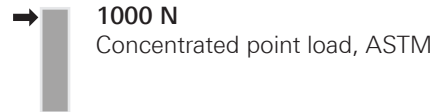
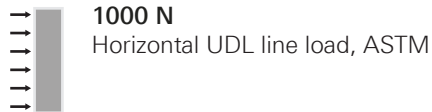
52 mm
Profile depth

58 mm
Profile depth

Max 1500 kg
Panel height

17.52 mm
Glass thickness

Schueco certified performance



The Schueco advantage

An integrated design, materials and service approach to deliver the highest global standards to your home



Design rigor & philosophy

Each system from Schueco brings 70 years of global experience in structural detailing and design innovation.



High-performance materials & processes

High-EPDM-content gasket with peroxide curing technology, integrated drainage system, and custom brush seal, all contribute to best-in-class air, water, wind and acoustic performance.



Accessory specifications & testing

Engineered, high-quality materials designed for smooth operation, corrosion resistance and durability with meticulous testing of all components, ensure consistent long-term performance.



Last-mile training and support

Schueco provides in-depth technical and hands-on training to the fabricator partners and certify them to deliver outstanding buildings.

Schueco - System solutions for windows, doors and façades

Schueco products are extensively used all over the world and meet the highest requirements of design, comfort, security and energy efficiency. Headquartered in Bielefeld, the Schueco Group has more than 6,330 employees worldwide and strives to be the industry leader in terms of technology and service today and in the future. The company is active in more than 80 countries and works together with over 40,000 fabricators, developers, architects and investors.



Registered office, Mumbai

Schueco India Private Limited
WeWork Chromium, Office No. 01A104,
JVLR, Raje Sambhaji Nagar, Andheri (East),
Mumbai, Maharashtra - 400 076
Phone: +91 22 678 689 89

Regional office, Bangalore

Schueco India Private Limited
Unit No.201, August Center BBMP Khatha No.
937/138 & 139/3B/1 Kempe Gowda International
Airport Road, Yelahanka, Bangalore - 560 064
Phone: +91 80 666 989 89

Regional office, New Delhi

Schueco India Private Limited
Office number 318, Tower B DLF Towers,
Jasola, New Delhi - 110 025
Phone: +91 11 694 089 89