

SCHÜCO

# panorama

NUMBERTWO

## BEAUTIFUL BY NATURE

Sliding doors bring the outdoors in – homes in Germany, Norway and Poland

## CREATING NEW SPACES

Panorama, classic or bi-fold design: Which sliding door is right for me? A guide

## HIGH-QUALITY MATERIAL

PVC-U or aluminium: Durable alternatives to meet a range of requirements

SCHÜCO



What a year it's been: when we published the first Panorama magazine back in spring, we were all facing a completely new challenge: the coronavirus pandemic. Now autumn has arrived, and it's clear that this year has been completely different to how most of us had planned. So much has changed that we are now living in a "new normal". The crisis has made us change our perspective – with one place taking on a whole new level of importance: our own four walls. If we can't leave our homes, we may as well make them more comfortable. This is all the more important during autumn and winter, when the days are shorter and the temperatures lower, which means it's the perfect time to make your home cosy and look outside at the falling leaves.

We have the perfect products to help you achieve this: our sliding doors, to which we have dedicated this magazine, allow you to enjoy uninterrupted views. Our slimline profiles and the non-existent thresholds allow nature and living space to become one – while keeping the cold outside, of course!

"It's the perfect time to make your home more comfortable."

I also believe that this year has made something else really clear to us, and that is how important it is to have a strong and reliable partner. We want to and will continue to be that for you. We've been proving we can do this for almost 70 years as the market leader in system solutions for windows, doors, sliding doors and façades. And what's important to us here? That's easy: to always find the best solution, be it in design, technology, security, comfort or sustainability – this is what drives our 5400 employees worldwide every day. See for yourself in this magazine or in one of our showrooms near you.

**The coronavirus crisis has changed many things. But one thing remains the same: we continue to work with passion, vision and energy, to ensure your house becomes a home!**

Andreas Engelhardt,  
Managing Partner  
Schüco International KG

# Contents

- 06 SAFE, SECURE, STYLISH**  
Inspirational homes from around the world
- 08 VIEWS FROM EVERY ANGLE**  
A villa on Gdańsk Bay
- 14 WHICH SLIDING DOOR IS RIGHT FOR ME?**  
A guide
- 20 LIVING WITH NATURE**  
Future-oriented construction in Brandenburg
- 26 INTELLIGENCE & EXPERTISE**  
Schüco and Gira join forces for networked building technology
- 28 HIGH-QUALITY MATERIAL**  
Durable: aluminium and PVC-U
- 30 EXCELLENT VIEWS – INSIDE AND OUT**  
An open living space in Rheine
- 36 BEHIND THE SCENES**  
Schüco on set with Joachim Löw
- 40 ALL UNDER ONE ROOF**  
Schüco solutions for the entire home
- 42 BLACK LODGE**  
Norwegian mountain chalet – fantastically modern
- 46 TOTAL TRANSFORMATION**  
Renovated home in Wemmel
- 50 VISIT US**  
At one of our seven showrooms across Germany



panorama – © Schüco International KG  
Address: Schüco International KG,  
Karolinenstraße 1–15, 33609 Bielefeld  
Photos: Schüco International KG, westend61, shutterstock  
Marketing and editorial: Dr Georg Spranger,  
Melanie Horsthemke  
Production: Drake Media GmbH  
Editorial team: Eva Herrmann, Hans Oberländer, Sabine Müntze  
Design & implementation: Sandra Korac  
Lithography: scanlitho.teams FullService GmbH

# WHAT A VIEW FOR YOUR HOME!

The wind is blowing, the snow is falling. But you can leave autumn and winter at the door and enjoy the view from indoors, where it is warm and secure. Your own personal sanctuary. In your home with wide views.

Our sliding doors open up precisely this kind of free space: with views of nature, the sky or the city lights. In this magazine, we want to inspire you. After all, it's on those cold days in particular when the importance

of high-quality construction really become clear. What does this mean for us? Investing in modern, timeless design, for example. But also using contemporary, technical possibilities and reliable, sustainable materials. Standing out with smart, energy-efficient and secure solutions.

**Discover new views, expand your horizons and experience Schüco!**



# Safe, secure, stylish

Given the long, hot summer we've had, it's hard to believe that autumn and winter and all that comes with them are just around the corner. But when it's raining, stormy or even snowing outside, this can make it even more cosy indoors, in our homes, our places of retreat. They protect us and make us comfortable; they are places where we share time with people who are important to us and where we take time for ourselves.

Everyone designs their homes to their personal taste. Schüco would love to help make your dreams, plans and ideas a reality. Together with

our local partner companies, we advise you and install our windows, doors, sliding and bi-fold systems, sun shading, balconies and conservatories. This means you can make your home as unique as you want it to be. The only thing that remains universal is our high standards.

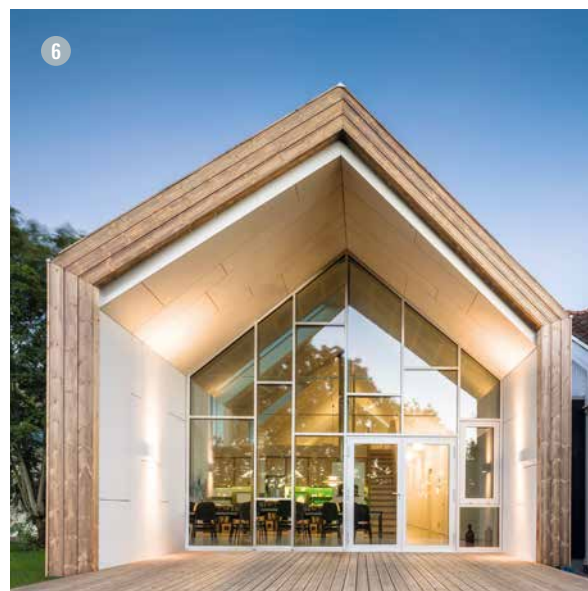
We always strive for top performance, in the operation and design of our products and in their energy efficiency. This protects our planet, saves costs and increases the value of your property as well.

## INSPIRATION FROM AROUND THE WORLD

You have dreams and ideas, we offer solutions – for the most unique homes and any climate, across the globe:

- 1 Torshälla, Sweden
- 2 London, UK
- 3 Goa, India
- 4 Stockholm, Sweden
- 5 Haslach, Germany
- 6 Sellevakk, Norway
- 7 Curitiba, Brazil
- 8 Polička, Czech Republic

**Discover more living environments by Schüco at [www.schueco.com/living-environments](http://www.schueco.com/living-environments)**



PRIVATE HOME IN GDYNIA

# Views from every angle





Finding a plot of land on the terraced coast of Gdańsk Bay with unspoiled views of the Baltic Sea was both a stroke of luck and a huge challenge. The modern new-build sought to showcase the breathtaking panoramic views of Gdańsk Bay from all angles of the building, while treating the historic neighbourhood with the respect it was due. The house unfolds over three levels along the hillside. The ground floor, with its open-plan living, cooking and dining space and adjacent wellness area, forms the heart of the home, while the private bedrooms are located on the upper floor. The large terrace connects the different sections of the building to form one ensemble. »

**T**he soft sound of the sea, the smell of the pine forests – all you can hear is the cry of the seagulls. Poland's Baltic coast enjoys 700 kilometres of shoreline, with a diverse landscape of deserted beaches, natural woodland, small villages, chic seaside resorts and bustling Hanseatic towns.





Large sliding door units allow the indoor space to become one with nature and provide multiple views of the Baltic Sea panorama. As much glass as possible and minimal profile face widths maximise the views of the landscape, which change depending on the weather and season. But the aesthetic elements weren't the only consideration. In addition to the clients' design and comfort requirements, the need for energy efficiency, innovative system technology, automation and security functions was integrated into the pared-back design too.

#### MORE INFORMATION

##### Location:

Gdynia, Poland

##### Schüco products:

Panorama Design sliding doors

##### For more pictures, visit:

[www.schueco.com/gdynia](http://www.schueco.com/gdynia)



## Ever been to Gdańsk Bay?

Do you like kayaking, sailing, or perhaps even kitesurfing? The natural harbour with water stretching between six and one hundred metres deep makes Gdańsk Bay the perfect place to try kitesurfing. Flat and sandy without strong waves, the 35 km-long Hel peninsula enjoys both windy and calm weather – perfect conditions for amateurs and professionals. The shipwrecks from World War Two are also popular with divers. The region has lots to offer in terms of culture too. The royal city of Gdańsk contains numerous nods to its traditional past, such as the patrician houses with their magnificent façades in the middle of the city. But those in the know are looking for something different: amber. This region is home to the largest known deposits of the "gold of the Baltic"...

# Which sliding door is right for me?

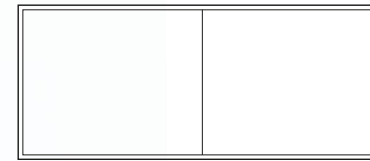
Sliding doors really transform a space – with stunning views and a great deal of freedom. Simply slide open the door to extend your living and working space from inside to outside, without any vents getting in the way. This is a benefit offered by all sliding systems. They are easy to use, save space, and are burglar-resistant – whether made of PVC-U or aluminium. They offer you the freedom to make your home unique – in terms of form, function, colour and technology.

The choice is yours: do you want a Panorama Design sliding door with large glass fronts? A classic lift-and-slide door? Or perhaps a bi-fold door to save even more space?

**Our guide will help you make the right choice.**

**LOOKING FOR YOUR DREAM DOOR?**

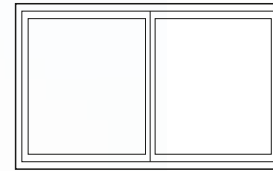
Find out more at:  
[www.schueco.com/my-sliding-door](http://www.schueco.com/my-sliding-door)



## Panorama Design

Frameless and large-scale  
**The exclusive one**

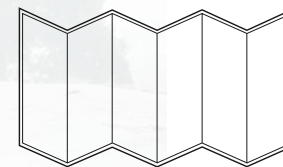
You can't get more transparency; everything else pales in comparison. Large-scale glass areas with very slim frames characterise the Schüco Panorama Design sliding doors which are flush-fitted in the wall, ceiling and floor. The attractive Panorama Design sliding doors are good at saving energy too. They also offer added convenience as required – when automated, they can easily be controlled via a tablet, smartphone or switch. Whether automated or manual, the system's increased burglar resistance to resistance class RC2 guarantees secure opening and closing.



## Classic Design

Versatile and proven:  
**The multitalented one**

You lift first, then open: this special feature sets the Schüco Classic Design sliding doors apart. By turning the handle, the units of the sliding door are first lifted and then slide on rollers to the right or left. This movement is effortless and silent, with the units sliding on up to three tracks, making large opening widths possible. Lift-and-slide doors can be opened to one side or from the middle in two directions. Classic Design sliding doors feature impressive weathertightness, as well as excellent thermal insulation and sound reduction properties.



## Bi-fold Design

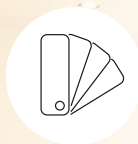
Flexible and space-saving:  
**The space-saving one**

Simply slide the door to one side and immediately bring the outdoors in – all this is possible with a bi-fold sliding door from Schüco. Complete glass walls can be opened fully by folding the individual units together and sliding them to one side. You can choose whether to fold the vents inwards or outwards and move them in one direction or both left and right, like a curtain. Whichever opening type you choose, your vents will glide silently and smoothly on roller carriages guided along tracks at the top and bottom.



**Sliding doors from Schüco offer a number of benefits**

No matter which of our sliding doors you choose, you can always rely on several things. For example, that all our products are easy to use and versatile – both today and tomorrow. We design our products to meet the current and potential future needs of all users, so they can use our systems easily and securely.



**Can be customised**

Numerous colour options for the profiles



**Ease of access**

Range of different thresholds and automation options



**Smart home**

Easy to integrate into your smart home system



**Thermal insulation**

Save energy with maximum thermal insulation



**Security**

Burglar resistance up to RC 2



**Sound reduction**

Sound reduction to 37 dB

# How will we live in future?

We find ourselves in a truly unprecedented state of change, both globally and locally. This enormous transformation potential gives us the chance to ask ourselves a very topical question: how are we going to live in future? Three trends are starting to emerge.

**1. Flexibility and adaptability**

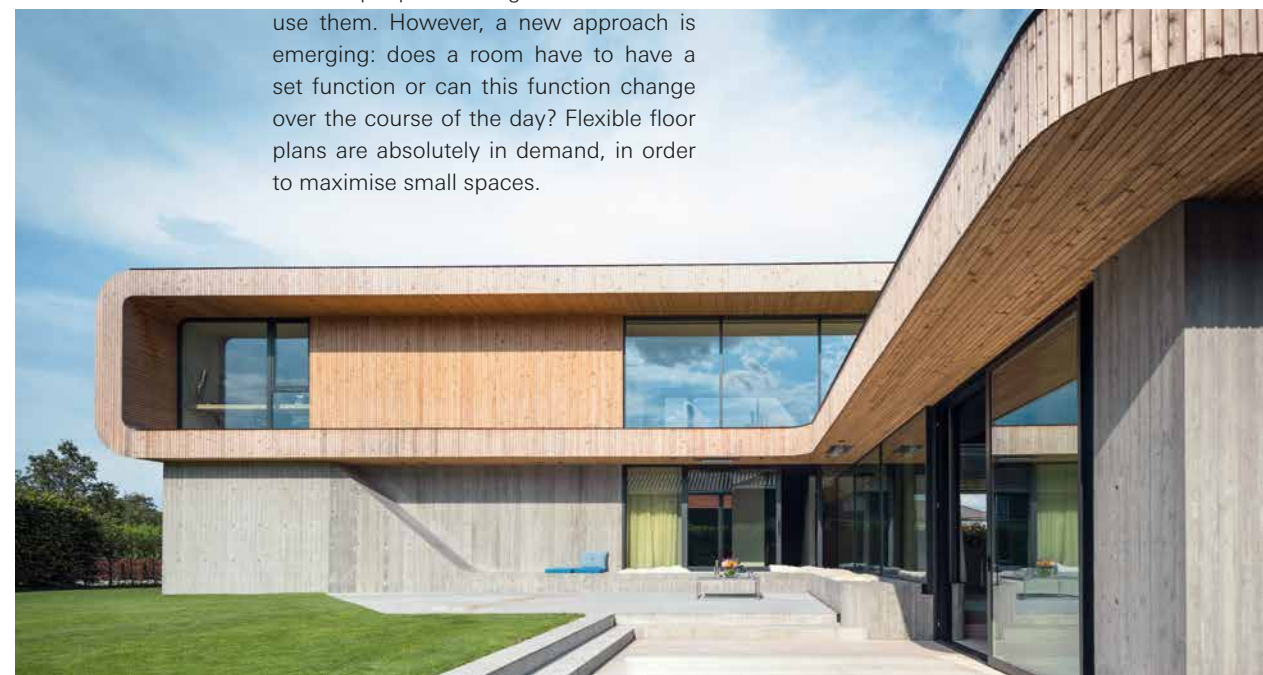
In response to the global pandemic, our living spaces have taken on a number of different functions: offices, classrooms, gyms, restaurants and music practice rooms, to name but a few examples. Before the coronavirus hit, we "only" thought about ease of access in rooms so that people of all generations could use them. However, a new approach is emerging: does a room have to have a set function or can this function change over the course of the day? Flexible floor plans are absolutely in demand, in order to maximise small spaces.

**2. Natural materials**

It is becoming increasingly important in this day and age to conserve our environment's resources. In addition to energy efficiency, the use of ecological building materials and ensuring that buildings last as long as possible continue to be key. The subject of healthy living is increasingly coming to the fore. By choosing environmentally friendly, pollutant-free building materials, you can create a healthy indoor climate and increase the comfort levels in your home for the long term.

**3. Technical innovations**

The ongoing development of smart applications which communicate with one another and can be controlled using an app will make living secure and comfortable in the future too. Intelligent systems will turn fun gadgets into serious applications. But the digital transformation doesn't stop here. A number of start-ups and innovators are working to revolutionise the construction sector – from 3D printing of complex structures through to the development of material innovations.





The Mono woollen blanket from **HAY** made from 100 % wool is soft, cuddly and sure to keep you warm on cold days.



Ball hanging light from **BoConcept**: a vintage icon. The famous "Ball" light was created in 1969 by Danish designer Benny Frandsen and has now been re-envisioned.



**ittala** Aino Aalto: the timeless design of these glasses was inspired by the ripples created by dropping a stone into water.



In partnership with Eames Office, **vitra** has created the Eames radio, the design of which is reminiscent of the compact radio developed by Charles and Ray Eames in 1946, which never saw production.



**Tom Dixon** – Eclectic: a trio of scented mini candles in handcrafted holders made out of copper, nickel and brass.

# w a r m & c o s y . . .



The AJ standing light – simultaneously discreet and extravagant – from **Louis Poulsen** has become a classic furnishing since Arne Jacobsen created it for the SAS hotel in Copenhagen.



The Leya lounge from **Freifrau**: a luxurious armchair with generous dimensions gives you plenty of room to enjoy an evening drink and a good book.



Functional and practical: the Componibili 2 container from **Kartell** impresses with its lightweight design and practical storage options.



With its unusual appearance, the Knot cushion from **Design House Stockholm** is both memorable and, with its bright colours, is sure to lend a fresh new look to any living room.



Here, everything is by design: The Kubus 4 candleholder from **by Lassen** is constructed with precision and an exact cubic structure.

# Living *with nature*

PRIVATE HOME IN BRANDENBURG AN DER HAVEL

"You can go wild!" Hearing this from a client is a welcome change, even for well-established architects. The result is obvious for all to see. Despite the strict building regulations in Brandenburg, a pleasant, architectural ensemble that stands out from its surroundings has been created in Brandenburg an der Havel. »





allows all building functions such as illumination, shading and central heating, as well the opening of sliding doors and the front door, to be managed from a central control unit. »

The core concept of bringing together nature and architecture is clear in how the home is incorporated into the riverbank. Due to their proximity to the Havel, the five cubic building structures are distributed across a raised base that appears to float. The deliberate positioning of each section creates a central, large space around which the other functions are arranged. The private living and working areas are therefore protected from unwanted on-lookers. Adjacent to the home itself is a guest wing, a garage containing utilities and a summerhouse with a sauna and pa-

tio, which offers the most beautiful view of the river. In keeping with the minimalist aesthetic of the home, the interiors make use of an understated material selection of exposed concrete, terrazzo and oak timbers. The highlight of the house is the large sliding doors. The architectural design deliberately plays with interior and exterior views, but also with lines of sight between areas with different uses. It was clear from the start that, alongside transitions without thresholds, the large sliding units should be operated via a tablet or at the touch of a button. The building automation system





*"The floor-to-ceiling sliding doors were the biggest challenge," admits client Bodo Gripp. "On the one hand due to the minimal profile widths, which detract from the view as little as possible, and on the other hand because of the heavy weight of the sliding units – which for me is also a question of security in terms of the burglar resistance class. We don't have any regrets about using Schüco. Even after five years, everything still works without a hitch."*

Gudrun and Bodo Gripp, clients



#### **FURTHER INFORMATION**

##### **Location:**

Brandenburg a. d. Havel, Germany

##### **Schüco products:**

Classic Design sliding doors  
Doors

##### **For more pictures, visit:**

[www.schueco.com/osthalbinsel](http://www.schueco.com/osthalbinsel)

# Ease of *access*

## BUILDING FOR THE FUTURE

Barrier-free building is building for the future. Building with ease of access in mind shows foresight in how individual living spaces are designed and creates an economically sustainable investment. "Easy-access" means that every inhabitant of a living space that has been designed to be barrier-free can safely access and use everything independently and largely without external help. Ease of access is not a question of age – everyone who has ever stood in front of a step with a full shopping cart or a pushchair appreciates its importance. A newbuild home offers the opportunity to think about ease of access from the outset and put in place everything to be able to easily convert to a barrier-free design if needed, whether that's entryways with suitable doors and barrier-free thresholds, external spaces such as balconies and patios, or barrier-free bathing. Schüco pursues principles for creating buildings with a future through a variety of solutions, products and services which can be used comfortably and operated independently of age and ability. For today and tomorrow.

#### **Find out more at:**

[www.schueco.com/universal-design](http://www.schueco.com/universal-design)





# Intelligence & expertise in perfect harmony

## SCHÜCO

and

## GIRA

The future belongs to smart living: any residential building designed today without smart building technology is already outdated. It is no longer possible to achieve a premium level of comfort, security and energy efficiency without intelligent building technology.

Holistic thinking in this regard pays off: planning for smart networking from the start, inside and outside, creates the ideal conditions for your smart home and avoids the irritation of incompatible isolated solutions further down the line.

Gira and Schüco, two companies with experience in networked building technology, have agreed to partner up. Perfectly aligned products and a clear commitment to being "made in Germany" are the basis of the collaboration between the two premium brands, which ideally complement one another. Experts on the intelligent building envelope and smart interiors are working together to provide guidance in the booming smart building market.

### Smart control for buildings both inside and outside

The shared solutions from Gira and Schüco ensure increased energy efficiency, comfort and security, whether it's for automatically controlling windows and sliding doors, networked ventilation solutions or managing doors and light and sun shading systems.

### Design and function

Networked devices and systems must also be cast from the same mould in terms of design. Effective product design has united Schüco and Gira for years, impressively underlined by numerous awards and close collaborations with leading architects. In the digital age, design also includes an intuitive operating interface for control devices and the option of accessing it conventionally by hand or a wall-mounted switch, as well as via smartphone, tablet or computer, either at home or on the move, and via voice command. Clear shapes and intuitive operation – intelligently combined.

### Security takes on a new dimension

Intelligent buildings create more security through burglar resistance and a reduced risk of accidents – but they can also themselves be a data security risk. That's why Schüco and Gira maintain the highest security and encryption standards, for example if smart functions are accessed when on the move.

## Materials for a timeless and long-lasting home

Whether it's made from aluminium or PVC-U, Schüco offers you a wide range of high-quality sliding doors and windows – energy-efficient, low-maintenance, long-lasting and sustainable. But requirements and personal taste are two different things – so we provide you with decision-making aids.

### Aluminium

is light and stable – even when the profiles are narrow. This makes aluminium the perfect material for outstanding views – with large windows, doors and sliding doors. Thanks to a special two-part construction and tightly sealed joints, thermal insulation isn't neglected either. Aluminium frames are easy to maintain and available in many colours and designs. The higher purchase prices often pay off because they are especially durable. Aluminium is also fully recyclable. We develop our products in line with the Cradle to Cradle principle: old material is separated, shredded and melted to become new components.

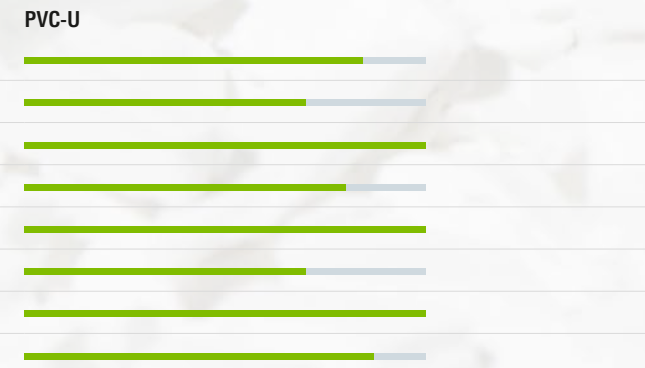
- Completely weather-resistant
- High stability despite narrow profiles
- High burglar resistance
- Increased property value
- 100% recyclable
- Range of options for surface finishing



### PVC-U

is a particularly popular material for great value sliding doors and windows. Systems from Schüco use high-quality PVC-U as their source material, stabilised to make it environmentally friendly. This is how we achieve good light and weathering resistance. Hollow chambers in the window profiles and special protective glazing ensure excellent thermal insulation. One major detail that makes our PVC-U systems stand out from the competition is the elasticated rubber EPDM material, which ensures optimum weathertightness for window and door units throughout their entire usage period. Schüco PVC-U systems are fully recyclable; this can be identified by the VinylPlus® product label, the sustainability programme of the European PVC industry.

- Excellent thermal insulation and weathering resistance
- Long service life without the need for repeated maintenance
- Cost-effective
- Good sound reduction properties
- Various surface designs available
- Good recyclability, integrated into the recycling system

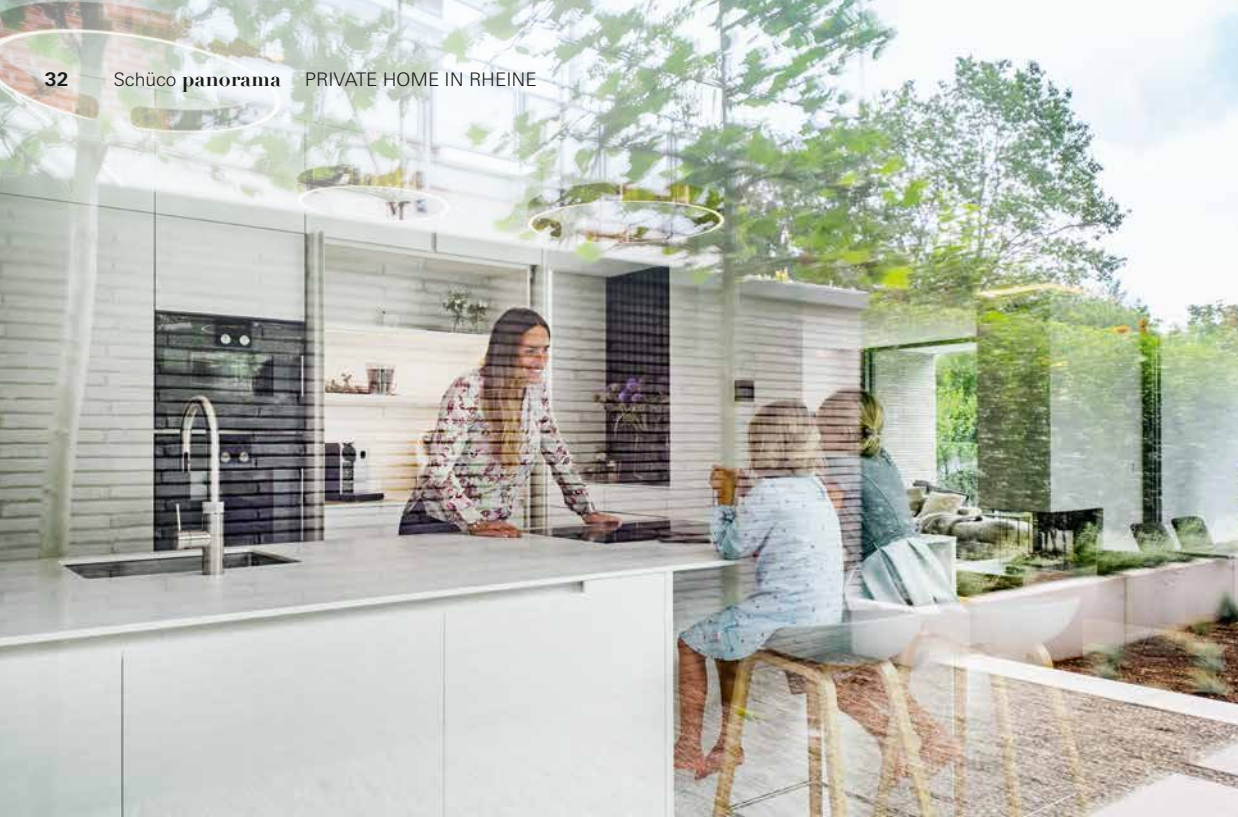




Excellent  
views  
inside  
and out







#### FURTHER INFORMATION

##### Location:

Rheine, Germany

##### Schüco products:

Classic Design sliding doors

Doors

Windows

Riverside living is a privilege. As the lifeline of a city, it is simultaneously a means of transport and a characterising feature of the landscape which, whether wild or tamed, provides a recreational space for everyone, both in and out of the water.

The private home for a family of four is situated not far from the river Ems, separated only by a cultivated strip of greenery. In order to make the best possible use of the limited building space, the architects positioned the angular structure in the rear part of the plot. This clever move allows the living spaces to overlook the garden and face the countryside around the Ems, and creates a private green area behind the house. Through the side entrance you enter a two-storey atrium which visually combines the living spaces on the ground floor and the private quarters on the upper floor.

The narrow footprint of the building required a creative solution to allow for an open living, cooking and eating area on the one hand and allow all the rooms to face, and be accessed from, the outside on the other hand. From the central entrance area, you pass through the kitchen straight into the outdoors. From there, the view continues uninterrupted, from the large window frontage through to the side garden area. The dining and living area is visually lowered via a step. A fireplace extending into the exterior divides the areas and breaks up the space. Floor-to-ceiling glazing allows for a transition between inside and outside without thresholds. An all-glass corner practically eliminates the wall, creating versatile sightlines and fields of view both within the living spac-

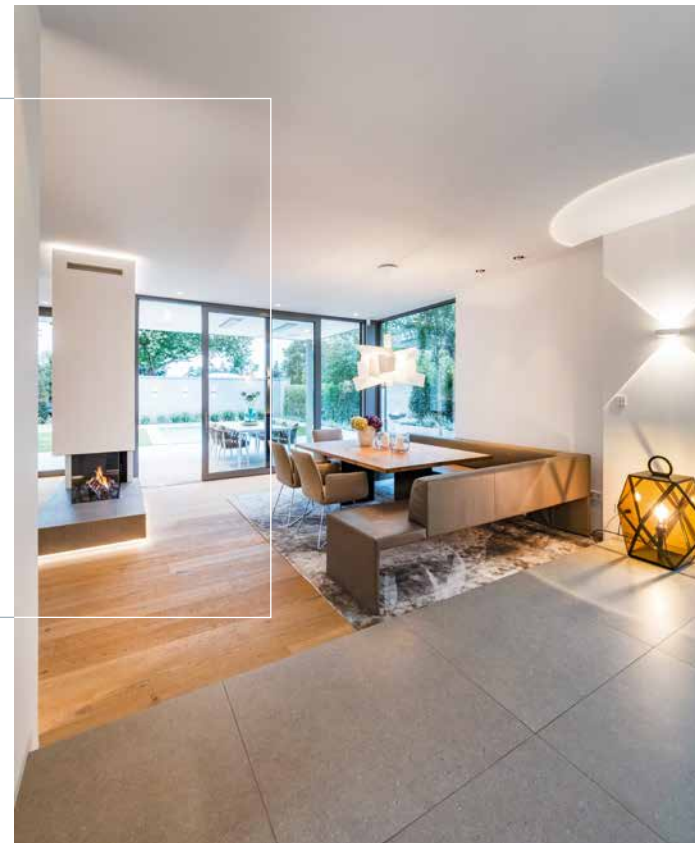
es and in relation to the outside. The private bedrooms on the upper floor are reached via an open timber staircase and a gallery running along the atrium.

The slightly nested building structures and the set-back top floor permit additional private outdoor spaces and sheltered areas on the ground floor. So, depending on the weather, you can live your life both indoors and outdoors during the summer months. The concept beautifully combines transparency and solid construction. The large-scale sliding units and window surfaces are interspersed with solid building components clad with long, bright clinker. In the evenings, the image transforms, with illuminated interiors radiating light like well-framed photographs.



"The narrow footprint of the building required a creative solution to allow the rooms to face the outside. The open-plan living, cooking and eating area on the ground floor creates versatile sight-lines between the inside and outside."

Anja and Jochen Engelshove, architects



# Focus

## Security

Cleanly designed building structures and façades, plenty of light and transparency as well as exciting material combinations are the trademark look of modern homes. Fortunately, security does not rule out contemporary design – on the contrary. Door opening with a fingerprint or PIN code and lock control via smartphone allows homeowners and their guests to effortlessly access the building. At the same time, a variety of RC security components provide a feeling of security in your own home: drill protection, locking bar fixing and anti-lift-out devices make the window gearbox hard to open. Modern lock technology and lockable handles offer a further safeguard against undesired break-ins through windows. Through building automation or integration in a smart home system, a high degree of security can be achieved with monitoring of locking of the windows coupled to the burglar alarm system.



# Behind the scenes

Schüco on set with Joachim Löw

Joachim Löw has been giving testimonials about Schüco since 2018. After the cameras stopped rolling, we visited the film set where, in real life, the Mönke family live. With this patch of real estate, the family literally found a needle in a haystack, and have built their dream home. The family members answer our questions below:

> **What makes your home special for you?**

< It's an individually designed spot to rest and relax for everyone in the family. Despite the minimalistic design, our home feels extremely cosy and inviting.

> **What was important to you when designing the house?**

< To make sure all the rooms in the house were correctly laid out, we paid special attention to views of nature, the direction the rooms face and how they are used throughout the day. To do this, we had to design several room layouts to find the ideal arrangement. Due to the hillside location, the ground floor was made from concrete, which is exposed in some spots. The house is a timber frame construction, which is not only green and sustainable, but also provides an extremely comfortable indoor climate. Likewise inside, we've worked with just a small number of natural materials: oak timbers combined with natural stone.

> **Even the façade is unusual – what's that all about?**

< We wanted the façade to have a unique character to it. That is why we opted for a Japanese traditional wood preservation technique – Shou Sugi Ban – which involves treating the wood using fire. The controlled charring of the outer timber layer preserves the material and is a natural way of protecting the wood from rot and insects.

> **Why did you decide to use Schüco systems in your home?**

< We wanted large, floor-to-ceiling glazing but also narrow vents. Nearly all of the windows have fixed glazing with a high proportion of glass to frame, which ensures unrestricted views of the natural surroundings. Schüco was a very reliable partner with tried-and-tested systems in this regard.

> **Where is your favourite place in the house?**

< The kitchen and dining room! There is an amazing view from there into the garden and the landscape beyond. We love the undulating landscape, particularly in the morning when there is still a slight mist hanging in the air – it is such a picturesque view.

> **What did you think when you realised your home had been chosen for a film shoot with Joachim Löw?**

< We were so excited right from the start and delighted that our home had been chosen for a film production like this.

> **What surprised you about the filming?**

< The amount of work on site was immense – there were so many people involved, who all had their own role, and there was so much technology and equipment. The few hours that we were able to spend observing the inner workings of the filming were incredibly inspiring and it is impressive to see how the storyboard was realised.

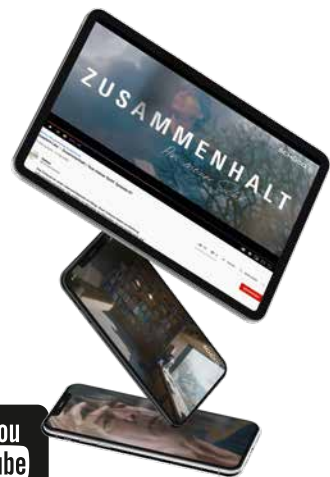
> **Did you get the opportunity to meet Joachim Löw in person?**

< We actually had the opportunity to eat lunch with him at our dinner table ...

> **What is your favourite scene in the film?**

< We have two favourite scenes: one where Joachim Löw sits at our window and looks out into the surroundings, and another where he stands at the bedroom window and watches the grass blowing in the wind outside.

**Thank you very much for this glimpse behind the scenes.**



The videos with Joachim Löw can be found on our Schüco YouTube channel under [www.youtube.de/schueco](http://www.youtube.de/schueco)

# inside outside



**ip44.de** aqu S: So beautiful that you will want to take it inside with you. The lamp collects energy throughout the day and, in the evening, it emits that energy in the form of an extraordinarily bright light.



**wodtke** GRYLL: cleverly convertible, from a simple and practical fire pit into a grill to cook up culinary delights. The ingenious turn function of the two cubes is very convenient and also provides protection from the wind.



The high Palissade Lounge Chair by **HAY** lets you while away the hours in your garden or on your balcony in comfort. The gently curving, flowing lines make this garden chair an eye-catching feature.



The Bowl by **höfats** is a flexible and multifunctional fire pit that can be used at two different heights.



An exquisite standing planter: the Shima Garden plant and flower pots by **Johanson Design** may not be very tall but have an extra-large diameter (up to 90 cm).



The Ploov wireless infrared heated cushion by **Stoov** will keep you warm at all times, wherever you are.

The upgraded Beosound A1 (2nd generation) from **Bang & Olufsen** is a refined handful of musical bliss, designed to be shared by everyone around – for hours on end.



The HeatUp patio heater from **eva solo** responds to the call for greater environmental friendliness and resource conservation in the manufacture of products for the exterior. The electrical operation of this modern patio heater results in reduced carbon emissions.



Now cushions and blankets are right where you need them: next to your seating area. The FORTE storage box from **conmoto** is both a functional container and an elegant way to store your outdoor cushions and blankets, even during winter.



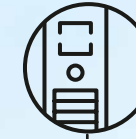
**SCHÜCO SUN SHADING**  
Attractive sun shading and weather protection with many variations for large-scale, individual façade designs



**SCHÜCO WINDOWS**  
Advanced functionality, comfort all year round and a puristic design, combined with a comprehensive choice of fittings and handles, plus a wide range of colours



**SCHÜCO BALCONIES**  
A wide variety of styles, optimised system compatibility, individual design options and a high level of weather resistance; suitable for newbuilds and existing properties



**SCHÜCO BUILDING AUTOMATION**  
Intelligent automation solutions for individual doors and windows, as well as fully networked systems for the entire building envelope



**SCHÜCO DOORS**  
Many different formats and numerous, timeless designs allow for the highest levels of security, thermal insulation and functionality



**SCHÜCO SLIDING DOORS**  
Many different opening types, timeless designs, ease of operation and maximum transparency

ALL UNDER  
*one roof*

**B** Build a new house or renovate an existing one – there is so much to consider! Mistakes often cost a lot of money and cause many a sleepless night. As a customer of Schüco you are on the safe side. Together with our partner companies, we are your reliable and expert companion – from the planning stage right through to the completion of your project.

Be it a window, entrance door or sliding door; balcony, conservatory or smart home solution – with Schüco, you get everything from a single source, fully coordinated and with the highest levels of

quality and functionality. Comfort and energy efficiency meet timeless design: large-scale windows and sliding doors create rooms that are flooded with light and extend the living space seamlessly out into the open. Automated locking concepts ensure security, while intelligent ventilation systems create a pleasant indoor climate. Easy to control, our modular windows and doors offer thermal insulation to passive house level. They consistently reduce the energy consumption of a building, which protects the environment and lowers operating costs. We thereby help you to create new spaces – for a relaxing living environment.

# BLACK LODGE

A REINTERPRETATION OF THE NORWEGIAN MOUNTAIN CHALET

The region around Ålesund is one of the most popular tourist hot-spots in Norway. In addition to the renowned UNESCO Natural World Heritage Site in Geirangerfjord and the snow-covered peaks of the Hjørundfjord, the ragged mountains of the Sunnmøre Alps projecting almost 2000 metres over the fjords also attract many visitors. In the midst of this impressive landscape sits the Black Lodge holiday home, like a founding in nature. »



„These mountains are special to me because they are home to my family. We want to create something special for the family with this lodge. I think my grandfather felt very at home here himself, as he had kept a small chalet for day trips since the 1960s.”

Andreas, client



If you are imagining a crackling open fire and a dormitory, you need to think again. This newbuild is nothing like a traditional mountain lodge. The individual functional zones are divided across three volumes. The sleeping areas for the owners and the bedrooms for up to twelve guests, including the bathroom and the outside bathing area, are situated on either side of the entrance. The third and largest zone is the “social hub” of the home. The open space is divided up by function, comprising the eating area, a small kitchen with an island for preparing and cooking food, and a living area. A large wood burner provides natural heat and a cosy ambience. Thanks to the floor-to-ceiling and corner panorama glazing, the boundary between inside and outside dissolves and the space offers spectacular views of the mountainscape all year round.

Due to the interconnected façade and roof areas, the building has an angular, rugged look. This desired appearance was achieved through the selection of materials – a combination of rust-red Corten steel and spruce wood panels. The black timber cladding indoors is also unusual, creating a further contrast with the natural surroundings in both summer and winter. In order to fulfil the requirements for comfort even in the extremely changeable climate of the Sunnmøre Alps, a sophisticated energy concept was put into practice in combination with highly thermally insulated frame technology and triple glazing with a thermal insulation coating.



# Winter in Norway

Mighty peaks in the background, the end of the ski slope on the banks of the fjord and après-ski on the deck of a sailing boat. If this sounds too good to be true, then you should travel to the Sunnmøre Alps in Norway. Thousands of years of ice erosion have given the mountains and the deep fjords their alpine form. One of the highest peaks, standing 1564 metres above sea level, is Slogen. Due to its pyramid shape that rises straight up from the Hjørundfjord, this mountain in Norway is the one that impresses visitors the most. And with good reason; the region is widely regarded among skiing enthusiasts as one of the most beautiful in the world. It is easy to leave civilisation behind and get lost in the charming yet dramatic natural setting.

## MORE INFORMATION

**Location:** Ålesund, Norway

### Schüco products:

Bi-fold Design sliding doors

Doors

Windows

Façades

### For more pictures, visit:

[www.schueco.com/black-lodge](http://www.schueco.com/black-lodge)



# Total transformation

**T**he small Flemish town of Wemmel is a wonderful place to live. The residents enjoy the benefit of both the natural surroundings, punctuated by numerous small castles, and the direct proximity to the capital city of Brussels. At the heart of the region stands a red brick house. Built in 1938 and renovated multiple times over the decades, it now has an elegant, glazed extension made from timber. The client's family of five had lived in the house for a number of years but wanted more space, more light and more comfort, not least because their law firm is also based on the ground floor.

The sloping plot and a height difference of around two metres mean the new annex is the most visible change. The extension allowed a generous opening out onto the garden to be created. Nestled around the old building in a snake-like formation, the new construction enhances the existing usable space on the ground floor by around 30 square metres, while creating

further room above the entrance area on the upper floor. "The interplay of old and new through the removal of some existing walls allowed a light and airy ground floor to be achieved with flowing transitions from the living room, dining room and kitchen," explains architect Koen Hofmans. "The functional design of the exterior staircase made from black steel provides the residents with direct access to the terrace and garden." In addition, the black-clad cellar houses a garage, a bike shed and sufficient storage space.

In order for the newbuild to be clearly distinguishable from the existing structure at first glance, the architect created a distinct contrast. Made from light Padauk wood, the façade stands out in an elegant and intricate way. » Other features of the design include large glass fronts and anthracite grey sliding doors that can be opened flexibly. The creation of a bright, airy ambiance through the use of materials is continued into the ground level with the herringbone parquet flooring and an



## MORE INFORMATION

**Location:** Wemmel, Belgium

### Schüco products:

- Classic Design sliding doors
- Doors
- Windows





„The interplay of old and new allowed a light and airy ground floor to be achieved with flowing transitions from the living room, dining room and kitchen.”

Koen Hofmans, architect



emphatically modern kitchen that also features an abundance of timber as well as black cupboard fronts.

Looking at the house from the street reveals further changes, including two new black aluminium windows: “The left of the two windows is a corner window and therefore provides stunning views out from the office. The window on the right has a slightly rounded shape in keeping with the gentle curve of the bay,” explains the architect. In parallel, the windows on the top floor were replaced with modern versions and the mansard roof was renovated with anthracite grey concrete roof tiles.

**In times of rising rents and low interest, many tenants are considering buying a property. When looking for the right house or plot of land, the question soon arises: newbuild or renovation?**

# Newbuild versus renovation

It's not an easy decision to make, as both options have their advantages and disadvantages. With existing buildings, the construction work required and the costs incurred are often underestimated. From the fabric of the building and a renovation of the energy efficiency right through to extension options – the older the building, the more expensive the refurbishment. From the perspective of resource consumption, renovations are preferable to newbuilds. The grey energy required for the construction of the building has already amortised and new areas don't need to be taken up. However, the visions of flexible spaces that users have are

more easy to implement in a newbuild, as are future needs in terms of easy access. Even if a newbuild comes out on top after the arguments have been weighed up, renovating an existing building still has one major plus point: its history and therefore its identity – be it through the conservation of an architecturally significant building or the function of a building as a landmark. It's a story that is worth telling.



# Showroom

SPOTLIGHT ON:

## Hamburg



In addition to large-scale exhibits covering a variety of concepts, the Hamburg showroom also offers meeting spaces for employees and visitors.

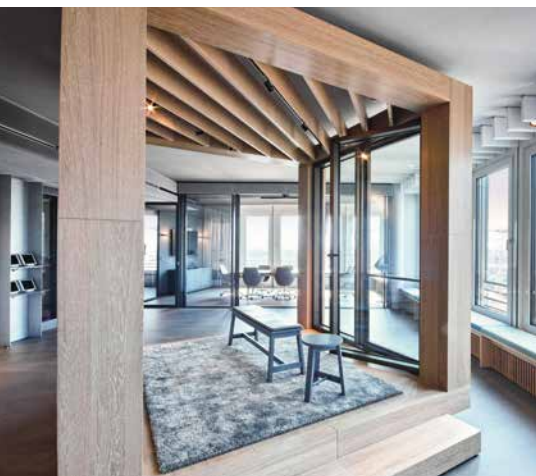
Schüco has been resident in the Watermark Tower, the tallest tower of Hamburg's Hafencity, since the end of last year. With 360° views of the city and the port, the seventh Schüco showroom in Germany was opened on the 16th floor. Across an area of 752m<sup>2</sup>, the Schüco product range can be experienced up close.

**Hamburg:** a vibrant metropolis with excellent prospects and a particular charm. Can you think of a better place for a Schüco showroom in northern Germany? Schüco can be found everywhere in Hamburg: 70% of the buildings at Hafencity have been constructed using Schüco system technology. So it's no surprise that the Watermark Tower, which houses the

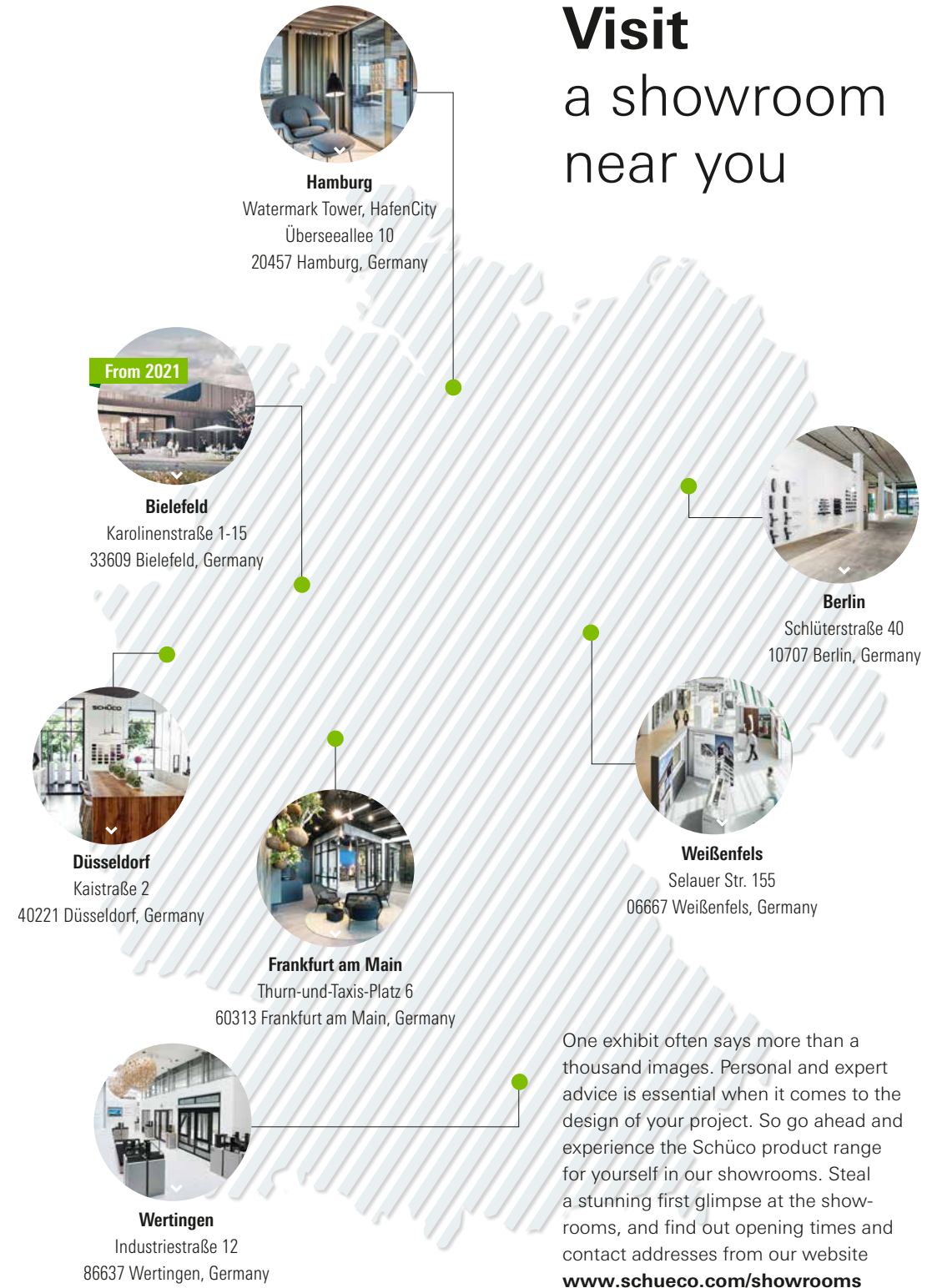
new showroom, is equipped with a Schüco unitised façade. The 70 metre-high tower with 18 stories is the tallest office building in Hafencity, guaranteeing impressive views from the showroom.

With large, integrated exhibits and sample corners for residential properties and business premises, burglar resistance and fire protection, the extensive range of Schüco products can be found on display here. In all, over 60 of the latest window, door, sliding and façade systems are featured in the Hamburg showroom.

**For more information, visit:**  
[www.schueco.com/showroom-hamburg](http://www.schueco.com/showroom-hamburg)



## Visit a showroom near you



One exhibit often says more than a thousand images. Personal and expert advice is essential when it comes to the design of your project. So go ahead and experience the Schüco product range for yourself in our showrooms. Steal a stunning first glimpse at the showrooms, and find out opening times and contact addresses from our website [www.schueco.com/showrooms](http://www.schueco.com/showrooms)



INTERESTED?

FOLLOW US:



We're here to help.



Use our service hotline:  
**+49 800 400 400 7**



Write to us:  
**view@schueco.com**



Visit one of our showrooms:  
**www.schueco.com/showrooms**



Would you like a brochure?  
**www.schueco.com/downloads**



**SCHÜCO**