

NUMMEREINS

panorama

ON THE BRIGHT SIDE

Sliding doors bring nature into these villas – in Norway, Sweden, Latvia and Greece

SLOW ARCHITECTURE

Build, one step at a time, with respect for the surroundings and using local building materials

TURNING OLD INTO NEW

The modernisation of a half-timbered house – sensitive and energy-efficient

SCHÜCO



In recent weeks, we have all started looking at the world differently. We are glad that there are many people whose farsighted vision benefits us all. Hopefully we will all have a good outlook again soon – and one that we can enjoy.

Perhaps you have a favourite view? I do. It is of the North Sea. That vast expanse of water. Nothing disturbs or detracts from the view. This is something I also want for buildings: uninterrupted views with such narrow profiles that you can almost see right through them. The sliding systems we are presenting in our “panorama” magazine have been designed by us for precisely this purpose.

We – the 5400 Schüco employees who work daily across the globe on turning your house into a home. With system solutions for windows, doors and façades. Since our foundation in 1951, our down-to-earth Bielefeld-based family

company has developed into an industry leader. With a great deal of passion, energy and expertise, we work in many fields – design, technology, security, comfort and sustainability – to do things better, all the time. Just like our sliding systems. This sometimes means making things smaller,

like our slimline profiles, or removing something completely, like the threshold. Our technology now makes it possible to bring space and nature together as one.

We think this creates good outlooks – whether you live by the sea or in a city. If you must build, build with vision. You can see for yourself what Schüco has to offer you in one of our many showrooms throughout Germany. But for now, you can find some inspiration here in the pages of our magazine.

I hope you enjoy reading about and discovering the best views! And above all, stay healthy.

“A home —
with vision!”

Andreas Engelhardt,
Managing Partner
Schüco International KG

Contents

- 04 A HOME WITH VISION**
High-quality construction for your well-being
- 08 ON THE BRIGHT SIDE**
Refined home design in Norway
- 14 SLOW ARCHITECTURE**
Sustainable construction – step-by-step
- 20 GREEK GEOMETRY**
Cubic architecture re-interpreted
- 25 UNIVERSAL DESIGN**
Our products are extremely easy to use
- 26 LIGHT AND AIRY**
10 tips for your personal vision
- 28 AMONG THE GREEN TREES**
Construction in harmony with nature
- 32 SMART HOME**
Solutions for a multifunctional home
- 38 TRANSPARENCY ON THREE LEVELS**
A private home in northern Cēsis
- 42 TURNING OLD INTO NEW**
Modernisation of a half-timbered house
- 44 COMING HOME**
With windows, doors and sliding doors from Schüco
- 46 SUSTAINABLE FOR THE ENVIRONMENT**
Schüco is taking responsibility



panorama – © Schüco International KG
Address: Schüco International KG,
Karolinenstraße 1 – 15, 33609 Bielefeld, Germany
Photos: Schüco International KG,
unsplash, shutterstock
Marketing and Editorial: Dr Georg Spranger,
Mariska Dahlke, Melanie Horsthemke
Production: Drake Media GmbH
Editorial: Eva Herrmann, Hans Oberländer, Sabine Müntze
Design & implementation: Sandra Korac
Lithography: scanlitho.teams FullService GmbH



*What makes a house a home? Is it a specific location?
A memory? Or is it the people? We all have our own
idea of what "home" means. No matter how different
these ideas are, they all have something in common:
a home is somewhere we like coming back to.
Somewhere we feel safe and secure.
What is a home? A home is your sanctuary.*

A home

WITH VISION

*With this magazine, we want to inspire you to build
with a particular focus in mind. For us it is high
quality. Invest in reliable, sustainable materials and
timeless design. Equip your house with smart, ener-
gy-efficient and secure solutions to make it a place
that you and your loved ones feel at home – your
personal retreat. »*





1



4



5



2



3



6



7

We at Schüco want you to feel total well-being in your home. Schüco has therefore made it its mission to develop products for the entire building. Be it windows, doors, façades, sliding and bi-fold doors, sun shading or conservatories, they are all modern design solutions that are energy-efficient, smart, well thought-out and secure. Our products help you to prevent heat loss in winter and overheating in summer, even with large-scale glazing like our

sliding doors. Built-in functions make your everyday life easier.

Perhaps you already have a precise idea of how your house should look. Or you are looking for that special something to make your dream house perfect. Wherever you are in the planning process, we are here to support you with our ideas. Our Schüco partners will help you to find the right solutions for you. And you can, of course, also experience our products up close in one of our

showrooms in your local area – more information can be found on page 45.

This magazine is filled with fascinating visions for you to experience just what sets our company apart!

INSPIRATION FROM AROUND THE GLOBE

Schüco provides ideas for a wide range of buildings in any climate zone. Our solutions can be found all over the world. **1** Private home, Toscolano-Maderno, Italy **2** Private home, Stensjön, Sweden **3** Private home, Singapore, Singapore **4** Private home, Teià, Spain **5** Private home, Crailsheim, Germany **6** Private home, Schondorf, Germany **7** Private home, Tolo, Greece

Discover more living environments by Schüco at www.schueco.com/living-environments



ON THE
sunny side

VILLA MELSTOKKE





The plot of land belonging to Villa Melstokke in southern Norway is punctuated by trees, heathland and rocks. Supported on a steel base, the house appears almost weightless in the surrounding landscape. Elegant sliding doors provide an uninterrupted view of nature's wonders – sometimes serene, sometimes wild.

The south-west coast of Norway is notorious for its heavy rainfall. But when the sun does shine, it enchants both people and nature – even through to the early hours in summer. For the construction of Villa Melstokke, it was therefore particularly important to the owners for the house to face the sun all day long. This was made possible through the special design of

the building. A V-shaped base made from steel elevates the house up towards the light. Two terraces lead out from the kitchen; one for the morning sun and one for the evening. Angled walls provide protection from the wind, while elegant sliding doors enable a view of nature's miracles from the comfort of the interior. Watching a storm in the fjord is better than any crime drama! »



DESIGN WITH PERSPECTIVE

Highly thermally insulated sliding doors made from aluminium and PVC-U create transparent barriers to the outside, while non-insulated sliding doors are used on the inside. Our products can be combined seamlessly with one another for total freedom when it comes to form, function, colour and technology. Sliding doors for generous openings; lift-and-slide doors for complete weather-tightness; bi-fold doors as amazing space savers and tilt/slide doors as a combination of a sliding door and a window – the choice is yours!

For more information visit:
www.schueco.com/sliding-possibilities

ADDITIONAL INFORMATION

Location:
Melstokke, Norway

Schüco products:
Bi-fold doors
Sliding doors
Windows
Façade

For more pictures, visit:
www.schueco.com/melstokke



Clean lines, smooth wooden surfaces and sparsely furnished rooms: the interior of Villa Melstokke has a puristic feel without seeming cold. The kitchen is the heart of the home for the young family who live there. The natural wonders of the surrounding fjord can be experienced up close through the large-scale window fronts and from the two terraces.

Slow Archi- tec- ture

Construction is increasingly being shaped by a type of architecture that is emerging gradually and growing organically. Slow architecture brings about successful alternative concepts to conventional buildings and places a great deal of importance on sustainability.

Mass consumption and “less is more”, rapid growth and deliberate slowing down – every trend has a counter-trend, even when it comes to building and architecture. Since the mid 1980s, clients, architects and tradesmen have been championing Slow Architecture as an alternative to conventional building. This involves creating houses that are efficient in terms of energy and space, are in harmony with their surroundings and have an attractive appearance. Often these structures are built slowly in the literal sense – growing organically and step-by-step. As part of this process, Slow Architecture ensures existing structures and building sections are included, for example, with used timber or recycled building fragments becoming part of the architectural design. Weathering and the perishable nature of the material are expressly permitted. Buildings are to be created that show respect for local traditions and that are in keeping with the location in terms of function and materials used. According to Christiane Varga, the starting point with Slow Architecture is the question “How do I want to live?”. As a journalist and sociologist at the Zukunftsinstitut, a German trend and innovation consulting firm, she researches the dynamic interactions that occur in the area of conflict between living and working.



Will Slow Architecture as a concept catch on?

We talk to Christiane Varga

> How did the Slow Architecture movement come about?

< As in many other fields, there has been a trend in architecture for several years now that involves being more conscious about our use of materials and challenging existing concepts. This is embedded in a growing interest in health, with people paying very precise attention to materials and production processes for textiles and ingredients in food. They are turning away from a throw-away culture – where architecture is concerned, too. Existing materials or construction methods are now being used more frequently in order to integrate new buildings into their respective environment, such that the specific, regional character and authenticity is made tangible.

> How widespread is Slow Architecture now?

< Driven by visionary and innovative thinkers, slow architecture is cropping up here and there, but the focus among clients remains primarily fixed on efficiency and cost. From a social point of view, we are emerging from a period of mass consumption that has now reached a peak »

following the economic boom and due to globalisation. Buying cheap T-shirts galore, then simply throwing them away instead of washing them, that is the height of consumerism.

But every trend has a countertrend. And we are therefore observing a renewed regional focus with regard to efficient construction, with carpenters and architects from the local area being commissioned. Healthy order books and strong demand can make local services cheaper and in turn allow clients with small budgets to afford a custom-designed house. This encourages Slow Architecture. Ultimately, however, it boils down to how we respond to simple questions like: How do I want to live? What do I want my surroundings to be like? What does the local area mean to me? What are the materials that I want to use made of?

> But with the current shortage of skilled workers, Slow Architecture is taking on a completely different meaning...

< Here it is clear just how important a holistic view is. After all, sustainability, training, craft and many other things are closely interlinked. It's not enough to focus on just one thing. In order to combat the shortage of skilled workers over the long term, we need to reconsider the types of training on offer and motivate young people. If nothing changes, then there will continue to be just a handful of clients, companies and architects with knowledge of organic architecture.

> What needs to happen for slow architecture to gain enough traction?

< The topic of sustainable construction needs to expand beyond the green niche. Sustainability can look great and be trendy. The problem is that the property industry is booming and there is no fundamental need for change. The motivation to make projects more complex and time-consuming is therefore low. It is all the more important to establish examples which inspire and motivate imitators, so that the pressure from customers grows. From this, a counter-trend will develop – as a counter-movement to our digital world too.

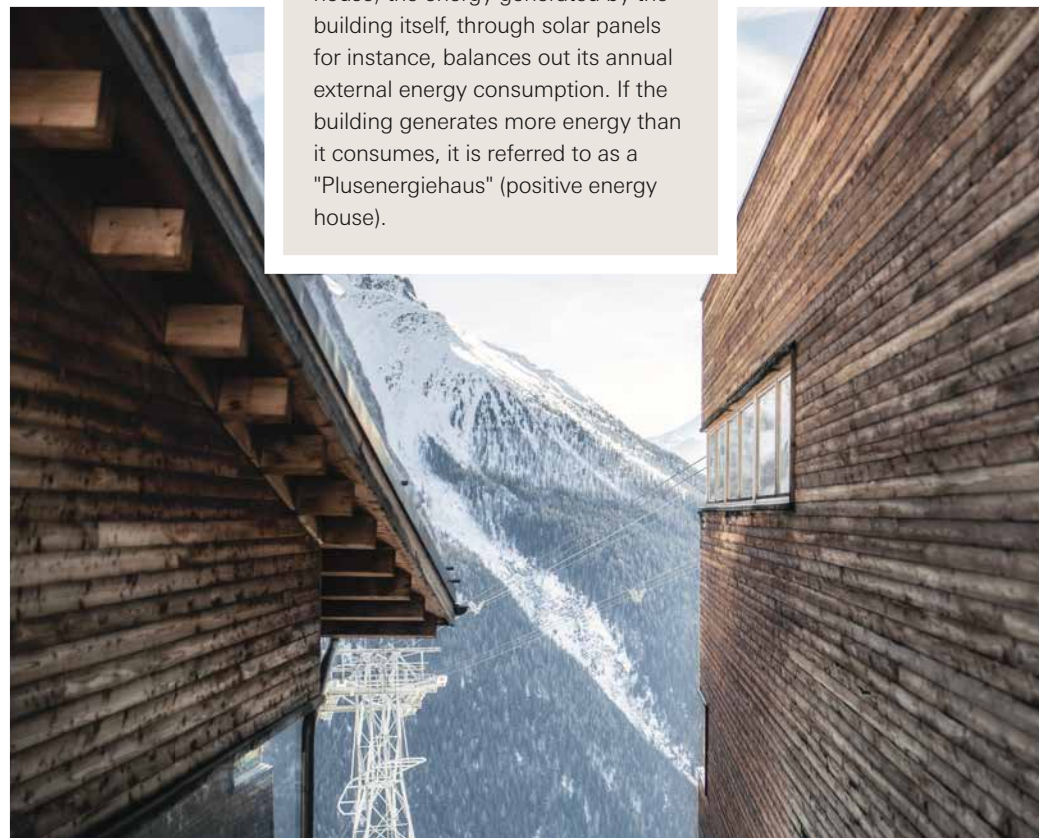
> The home as a place of respite from the endlessness of the digital space?

< The house is becoming more and more attractive as an anchor point, and as a way to place limits on the blurring together of your professional and private life. It's important to spread the ethos of slow architecture in an undogmatic way that is not "preachy". It's not just about building mud huts single-handedly, but creating an awareness of organic structures and promoting architecture that addresses this area. Individual actions can have a huge impact without the need to abandon basic concepts. Change is a process which is also allowed to have a playful aspect and which carries on gradually, step by step. It's about excitement, not indoctrination. It doesn't happen overnight, but this is ultimately what slow architecture is all about.

A matter of type

The energy-efficient house

The German term "Energiesparhaus" (energy-saving house) refers to a type of house which uses less energy in comparison to similar properties. In a "Niedrigenergiehaus" (low-energy house), the energy consumption is significantly less than the legally enforced values specified in the German energy-saving regulations (EnEV) thanks to thermal insulation. Pleasant temperatures in passive houses are ensured by large south-facing windows as well as especially effective insulation and ventilation. The house therefore has an annual energy consumption equivalent to about 1.5 litres of heating oil per square metre, this energy being primarily provided by solar panels. In a "Nullenergiehaus" (zero-energy house) the energy generated by the building itself, through solar panels for instance, balances out its annual external energy consumption. If the building generates more energy than it consumes, it is referred to as a "Plusenergiehaus" (positive energy house).





Interlücke jalis: combines the benefits of a box-spring bed with first-class design.



Glittering comfort: Sparkling Peak Lanterns and Sparkling Cut tealight holders from **Bolia**.



Combi vase from **BoConcept**: a mixture of solid, elegant glass and natural stone.



COR Nenou: "Nenúfar" is Spanish and means "water lily" – the inspiration for this furniture concept.



This polyhedral hanging lamp [T2] from **Gant Lights** is cast from grey concrete. It combines elegant gold and raw concrete to create a timeless and extraordinary designer light fixture.



JAB Anstoetz: "Cheyne Walk", the extensive ornamental design range focuses on cultivated understatement and impresses with a discrete line paired with a luxurious feel.



Eames Elephant from **Vitra**: Toy and sculpture in one.

PURE & COSY

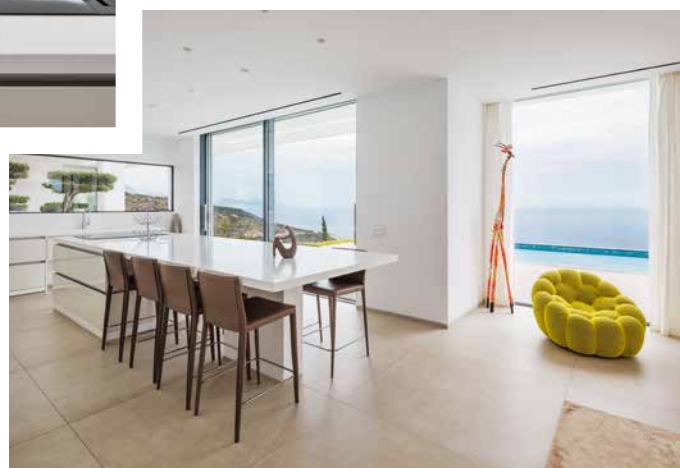
Motel a Miio beliche: Glossy on the inside and matt on the outside, making the plates and bowls of this series something special.



Light & shade

A villa on the Greek island of Zakynthos re-interprets classic cubic architecture. Floor-to-ceiling glazing and sliding systems allow geometry with the best views. »





ADDITIONAL INFORMATION

Location:

Zakynthos, Greece

Schüco product:

Panorama Design sliding door

See more pictures at:

www.schueco.com/zakynthos

areas, large-format glazing and a natural stone wall as the backbone connect the solid construction with the lightness and elegance of the modern architecture. Room-height glazing using profiles with minimal face widths and no disruptive handles enable a maximum field of vision, from the sleeping and living areas, and even the bathrooms. The new villa

Blue skies and blue ocean, chalk white cubes on sun-blasted earth: a picture of Greece that never ceases to charm its visitors. Whether the cubes are a chapel, a modest farmhouse or even just a barn, often a brightly painted wooden door or one or two flower boxes are what makes these buildings really stand out. Their forms are archaic yet modern, they are timeless. They blend in seamlessly with the landscape, sometimes paradoxically: strict geometries against gentle rolling hills. This is exactly the case on the Ionian island of Zakynthos. However, this building cannot be confused with a church or farmhouse, even from afar. It is a villa with two levels on a narrow plateau upon a hilltop, with breathtaking views of the Ionian Sea. White plastered

comes alive through the interplay of light and shadow. The pergolas provide both sun shading and screening. The sliding systems from Schüco allow the indoors and outdoors to merge, giving the residents a feeling of freedom. This continues throughout the year, as the villa is also designed as a place to retreat in winter. The architect therefore put a particular focus on thermal insulation and sound reduction, opting for a Schüco Panorama Design sliding system. An underfloor system provides additional comfort by heating up in the winter and cooling down in the summer.

Island of Zakynthos

A tip for your next holiday

A turquoise sea, limestone cliffs, lush vegetation and traditional villages are what make the island of Zakynthos an increasingly popular travel destination. The south side draws mostly package holiday-makers, but the rough west coast hides the island's real gem: Navagio Beach, one of the most beautiful in Greece. There lies the wreck of a smuggler's ship – an adventure for adults and children alike! Even getting to the beach is a trip in itself as you can only reach it by boat. The sea is warm enough to swim in, even in October, when most tourists have already left the island. The taverns and restaurants of Zakynthos town are quieter and the seafood and spaghetti still taste delicious!



Universal Design

Step
effortlessly
into the
outdoors

Our products are always intended to be simple, easy to use and versatile. That's why we follow the holistic concept of universal design: we design products, buildings and their surroundings so that they meet the current and potential future needs of all users, regardless of age, size or ability, with optimum security and maximum convenience. For instance, so that transitions from indoor to outdoor areas do not form trip hazards, zero-level threshold transitions are indispensable for wheelchair users. Our systems reduce the profile geometries to a minimum or even allow them to disappear entirely into the floor, wall and ceiling. We offer solutions ranging from smart comfort products to solutions that are DIN compliant, regardless of whether it is by way of having freely adjustable operating forces, zero level thresholds or threshold solutions that meet the requirements for easy-access construction in DIN 18040.



more
than

a view

10 TIPS FOR YOUR PERSONAL VISION

“Light and airy” were the main demands of modernism. In terms of technology and construction, a lot has changed in the 100 years since the famous Bauhaus in Weimar was founded. Yet what remains unchanged is the desire to get out of inside spaces. Well thought-out designs allow visionary concepts to be created with sustainable solutions for individual living environments. Inside becomes outside, space grows, air flows and the view is limitless. It's more than a view!

01 VIEW – WHICH VIEW DO YOU WANT TO FRAME?

A view of nature or an urban panorama gains more depth when you can sink right into it. The vista, that view from inside to outside, should showcase everything down to the last detail. Nothing should disturb or detract from the harmony between nature and architecture.

02 CHECK YOUR ANGLE OF VISION

The position of the opening determines the view. Where are the opening vents and the fixed units? Does the window define the precise view? Does the sliding system open out across the full width of the building? Or is the view positioned over a corner so it would be nice if there were no unsightly mullions?

03 HOW MUCH OR LITTLE WINDOW FRAME DO YOU WANT TO SEE?

The choice of sliding door is key if you want to achieve maximum transparency. By using concealed frames in the wall and ceiling, as well as minimal profile face widths and installation depths, the visual components of the sliding door are reduced to a minimum, without having to sacrifice flexibility in terms of opening types and surface finishing.

04 APPRECIATE THE IMPORTANCE OF A THRESHOLD-FREE TRANSITION

Buildings and products should be equipped so that they can meet the current and potential future needs of all users and are as easy to operate as possible. Threshold-free transitions are convenient, they eliminate tripping hazards and are essential to meet the requirements of barrier-free building in accordance with DIN 18040.

05 WHICH OPENING TYPE ARE YOU?

Whether it is a sliding, lift-and-slide or bi-fold door, the selection of specific opening types depends on the design and project-specific requirements. In order to decide which type of sliding door works best in a building in terms of both function and appearance, some basic questions need to be answered. Is there enough space for glass units to slide in front of one another? Is it possible to insert it in the wall? Is the clear passage sufficient to allow maximum transparency?

06 WOULD YOU LIKE A HANDLE OR WOULD A SIMPLE COMMAND SUFFICE?

Whether manual or mechatronic, sliding doors must be easy to operate. Different technologies are available to put the functions into action. There are a range of handle options from standard handles to fully integrated pull grips that can be operated with one hand and operating switches on the window vent or wall that can be controlled by anything from an app to voice control.

07 HOW SECURE SHOULD THE SYSTEM BE?

Protection from uninvited visitors should be taken into consideration. DIN EN 1627 lists requirements and classifications which apply to burglar-resistant building components such as doors and windows. A differentiation is made between the different Resistance Classes (RC), from RC 2 (recommended by the police) to RC 6. Find out more at www.schueco.de/sicherheit

08 HOW NETWORKED ARE YOU?

It is no longer possible to build luxury residences without intelligent building technology. The networking and automation of building functions is essential for efficient and sustainable building management: for all climates, with functional flexibility and a unique aesthetic.

09 THINK ABOUT TOMORROW TODAY

The boundaries between comfort, security and benefits are fluid. Buildings and products should be designed to guarantee a broad range of use for almost everyone, regardless of their capabilities. With easy and intuitive operation.

10 IN HARMONY WITH THE LIFE CYCLE

Good architecture means being ready for the future today – ecologically, economically and socially. It is no longer enough to simply produce building components in a sustainable way. Sustainable business practices encompass many things: the sustainable extraction of raw materials and the use of recycled material, as well as strict criteria for production, installation, use, and finally dismantling including recycling.

Find inspiration for your personal vision at:
www.schueco.com/my-sliding-door

Among the green trees



Not far from the centre of Gothenburg and yet surrounded by nature: With Villa Mölnlycke, a Swedish family of four has made their dream home a reality. The foundation is raised slightly, with a copse of trees to the left and lake Långetjärn to the right. From the outset, it was decided that the newbuild should infringe upon nature as little as possible. »

MORE INFORMATION

Location:
Mölnlycke, near Gothenburg, Sweden

Schüco products:

Sliding doors
Doors
Windows
Façade

See more pictures at:
www.schueco.com/moelnlycke



In this case, the family wanted a light and airy house that still simultaneously provided a sense of safety and seclusion. This presented the architect with a balancing act that she mastered with a slim cubic shape. With a roof covered with plants and a façade of vertical wooden slats, the house blends into the trees behind. Initially concealed from visitors, the house opens up to the rear across two storeys. This cre-

ates a private outdoor space which provides a sheltered view of the lake and the evening sun. Large-format sliding units dissolve the boundaries between indoors and outdoors. The house can be opened up completely on sunny days, while on winter days the doors remain closed and the family stays warm. The Schüco systems, like paintings on a wall, frame the highlight of the villa: the undisturbed view of nature.

More than a word Hygge

Cosiness, warmth, familiarity, safety – you can't reduce the translation of the Scandinavian term "Hygge" to a single word. Rather, it is an ethos that extends into all areas of your daily life. It starts with the individual decor, with natural materials like wood and soft fabrics, warm colours from nature or the cosy light by the fire.

But Hygge is so much more than that. Slowing down and appreciating the little things are what bring us back to earth amid the turbulence of our everyday lives. Like sitting down to a meal together, sharing conversations with friends and family around a big table. Hyggelig is also time spent in nature, consciously experiencing the seasons: the first strawberries from your garden or the first summer swim in an ice-cold mountain lake. Or simply just appreciating those small, happy moments of everyday life – and this feeling is seldom something you can bottle up and take home with you.

Alexa . . .

...turn on the coffee machine and switch on the lights.
 ...open the door for the cat.
 ...what's the weather looking like this weekend?
 ...what's on my to-do list today?

Alexa, close the window!



What still sounds futuristic today will be familiar tomorrow. Around 26 billion devices across the globe are already part of the internet of things, creating added value through smart networking. With intelligent smart home technology, residential buildings can better meet their users' increased demands for comfort, security and energy management and thereby improve the sustainability and future viability of the property. In addition to great features for users like home entertainment, smart household appliances and app-based lighting and shading control, these future-proof technologies can set the relevant standards for the world of tomorrow. Everything from individual functions to entire scenarios is possible, be it entry security and access management, data protection, networked smoke and motion detectors, air quality safeguards or occupancy simulation.

That's smart

Facts and figures



46% of Germans use at least one smart home application



4.2 billion euros spent on the German smart home market in 2020



Current smart home applications:
67% Entertainment and communication
54% Energy management
37% Building and home security



100 million Alexa voice-activated assistants have been sold to date



Top reasons for purchase:
 Convenience **57%**
 Security **39%**
 Fun **38%**

Entertainment and communication, energy management and security: smart home applications are becoming ever more popular, including in Germany.

BUILDING AUTOMATION SOLUTIONS FROM SCHÜCO

Smart solutions: the key factors

Smart homes do not pose a technological or financial risk. Schüco develops smart façades which form part of the complete vertical building envelope including sliding doors – for all climates, with functional flexibility and a unique aesthetic.



Comfort and security – invisible and at your fingertips

FULLY AUTOMATED.

With Schüco TipTronic SimplySmart, the touch of a button is all it takes to open and close windows and even large, heavy sliding units. What's more, if the weather becomes unpleasant, the integrated weather sensor closes all of the windows automatically. The actuator technology is concealed in the fittings and operates almost silently.

SIMPLY SMART.

Thanks to individual operation using a handle, wall-mounted switch or mobile devices, the system can fulfil almost any requirement. Schüco TipTronic can be easily integrated in external smart home systems such as Amazon Alexa.

COMFORT

A building and its functions should provide maximum comfort and ease of use for the people living in it. Schüco Building Skin Control offers flexible operation for all window vent sizes and weights, whether via simple operating switches, smartphone app, voice commands or completely independently by means of automation functions.

ENERGY

Thanks to comprehensive networking, intelligent façades help to drastically reduce the energy consumption of buildings. After all, not only will appearance and performance matter in future, the intelligence of building components will too, such as time-controlled window ventilation or energy-saving night-time cooling using sensor technology.

SECURITY

Communication between the smart façade and networked sensors meets the increasing demands for digital building security technology. Hackers don't stand a chance – all of the data is stored on encrypted servers in the EU and is subject to the GDPR (General Data Protection Regulation).

SUSTAINABILITY

Wherever possible, the building and its integrated technology should be constructed using sustainably produced materials. Technology that can be easily used by all people and across all ages is essential.

FUTURE VIABILITY

The building concept developed and the embedded technology needs to be long-lasting and constantly updated in line with the latest technological developments. This increases the value of the property and makes it fun!

For more information about our smart home solutions, visit:
www.schueco.com/smart-home

IP44.de intro pure white:
They say that simple is always
the most difficult to achieve.
But intro is the most convincing
counterexample of this:
a chunky yet beautiful cube
with rounded edges, fitted
with state-of-the-art LED
technology.



inside | outside



Dornbracht Rain Sky E: Just
like a refreshing rain shower,
the Dornbracht Rain Sky rain panel
drenches your body in water.

inside | outside



Conmoto: The benches and the table
from the RIVA series come together
to form a harmonious whole offering
plenty of space. A statement piece
that can also be used outside.

With its timelessly
modern form, the
E2 range of switches
from **Gira** fits in with
any interior design style.



Revox STUDIOART A100
Room Speaker. Smart and
autonomously networked,
this ingenious active speaker
brings you studio sound
quality wherever you are.



Transparency on three levels



Light, visibility and puristic materials. A private home in the north Latvian town of Cēsis combines austere design with modern comfort and sustainable energy efficiency. Façade, window and automated sliding door systems from Schüco are key elements of the concept. »



In the winter, it gets very cold in Cēsis. The thermally insulated façade and the triple insulating glazing of the Schüco system considerably improve the level of well-being and energy efficiency. On top of all this, the house is also designed for low energy consumption. The concealed Schüco e-slide drive system opens, closes and locks the sliding doors automatically, thereby supporting the smart home concept of the building.



Cēsis, a medieval harbour and market town in northern Latvia, is situated in a picturesque landscape above the River Gauja. In the perfect hillside location, a private home has been built – at once respectfully integrated into the landscape but nevertheless outstanding. It is a three-storey construction made from solid double-layer concrete, steel and large glass fronts. Despite its imposing character, the building seems almost austere. At the same time, it offers maximum comfort and panoramic views to make your heart sing. To achieve this, façade, window and sliding systems from Schüco are used on the inside. Installed from the floor to the ceiling and with a width of twelve metres, they enable the boundaries between the living space and nature outside to melt away. The living room is open towards the top floor. A staircase and the gallery provide access to the private quarters of the client and to a terrace.



FURTHER INFORMATION

Location:
Cēsis, Latvia

Schüco Products:
Panorama Design sliding door

Schüco protects

Break-ins happen everywhere – in detached homes and apartment blocks, villas and rented accommodation. In over 90 percent of cases, the perpetrators break in through poorly protected openings, like windows, sliding doors and entrance doors. But many break-ins can be prevented with the right behaviour and security technology.

With burglar-resistant windows, doors and sliding doors from Schüco, any threats are simply eliminated. The Schüco security seal represents almost 70 years of experience in developing secure, certified system technology and fulfilling legally required standards as well as resistance classes to RC 3*. From the initial product sketches right through to development and fabrication, with comprehensive tests at its in-house Technology Center, well thought-out systems are created for perfect burglar resistance – the Schüco system guarantee makes sure of it.

P.S.: Embassies, banks and museums all trust security technology from SÄLZER, which is part of Schüco (www.saelzer.de).

*RC = Resistance Class
(as per the applicable European standards)

Turning old into new

The town of Rietberg on the river Ems is characterised by a number of preserved gabled houses with timber framing and large areas of parkland. The plot owned by architect Anke Becker's family also includes a well-preserved timbered building from 1824 which was extended at the turn of the last century to include living quarters.



For the newbuild, the architect set out to find traces of the materials used in the original building components, hidden beneath the layers of time. The concept for the new ensemble strikes a balance between retaining the substance of the old building and bringing it up to date. The cubic extension is deliberately modern in its design but smaller than the original building in terms of proportion. A slimline two-storey glazed atrium harmoniously connects the old to the new. There are nods to the old building everywhere, both in the clinker material that is typical of the region and in the brickwork itself. Small details such as the retention of the old external façade in the new interior and the attachment of the glazed connecting section using select construction profiles all demonstrate the respectful treatment of the building's history. While the ground floor extends the living room out from the old building, a bedroom with dressing room and a bathroom on the top floor increase the number of rooms in the house.

Inspired by the endless views of the surrounding countryside, floor-to-ceiling glazing was planned for the south façade. The affinity with the strict grid of the timber frame can also be clearly seen in the division of the glazed areas. The dissolution of spatial boundaries between indoors and outdoors can be clearly felt at all times of the day and year.

FURTHER INFORMATION

Location:

Rietberg, Germany

Schüco products:

Windows

Coming home

With windows, doors and sliding doors from Schüco

Comfort

Design

Security

Sustainability

FASCINATING TRANSPARENCY

Open out the living room to the terrace by turning the handle, integrate floor-to-ceiling units, flood rooms with daylight: with large **sliding and bi-fold doors** from Schüco, the choice is yours. Maximum transparency is a given too. This is ensured by the slimline profiles which form our extremely robust, durable constructions.

ARCHITECTURAL EXTRAS

Conservatories offer an attractive extension to your living space – and can be designed and enjoyed in more ways than ever before. Whether you're looking for a haven of tranquility, indoor garden or party zone, your Schüco partner will help you find the perfectly tailored solution for your home.

IMPRESSIVE VARIETY

Colour, form, function – many things are a question of taste. Schüco makes it easy for you to incorporate your individual style. For example, with universal handle design lines for windows, entrance doors and sliding doors. Elegant, ergonomic and easy to use.

OUTSTANDING INSULATION

Be it aluminium or PVC-U, modern **window and sliding door constructions** from Schüco have one thing in common: they are extremely energy efficient. Their basic designs already achieve high thermal insulation values, which means that they can be increased to passive house standard – for a pleasant indoor climate and markedly reduced heating costs.

Sustainable for the environment

The negative effects of climate change and the scarcity of raw materials and resources affect each and every one of us. We therefore have a duty to act responsibly, especially in construction. After all, it consumes 50% of the world's raw materials and generates 60% of waste in Germany. As a developer and supplier of window, door and façade systems, we are aware that, with every newbuild, we are laying the foundations for the developments that take place over subsequent decades. This is why we support sustainable construction products around the world with our products and services. Together with the WWF Germany (Worldwide Fund for Nature) we are working to enshrine science-based climate objectives in our day-to-day business.

Where the materials aluminium, steel and PVC are concerned, we pioneer energy-efficient solutions which conserve resources. Schüco is a pioneer in the construction industry when it comes to the development of certified Cradle to Cradle (C2) products for the construction industry. All of these aspects strengthen our resolve to be a leader in technology and services with our products and services in future as well.

For more information, visit www.schueco.com/sustainability



Energy efficiency

– 80 %

Efficient insulation allows Schüco windows to save up to 80% of a building's energy costs.

From 2021

all new buildings must be nearly zero-energy buildings in accordance with an EU directive on the overall energy performance of buildings.

98%

of the lights in our offices are programmable LEDs which only turn on when required.



Recycling

360°

The Schüco sustainability approach encompasses the whole lifecycle of a product, through to the possibility of dismantling it and feeding it back into the closed recycling process.

98%

of aluminium façades, windows and doors are recycled in Germany.

43

Silver and Bronze-certified systems, making Schüco a pioneer of the Cradle-to-Cradle principle in the construction sector.



CO₂

40%

of carbon emissions in Europe are caused by buildings.

100%

Throughout Germany, Schüco purchases exclusively certified green electricity.

2° foundation

Together with the foundation, we campaign to successfully bring about the energy revolution and to conduct business in a way which conserves resources.

Visit one of our showrooms in your area



Hamburg

Watermark Tower, HafenCity
Überseeallee 10
20457 Hamburg, Germany
Tel.: +49 40/696388-100



FROM 2021

Bielefeld

Karolinenstraße 1-15
33609 Bielefeld, Germany
Tel.: +49 521/783-0



Berlin

Schlüterstraße 40
10707 Berlin, Germany
Tel.: +49 30/887282250



Düsseldorf

Kaistraße 2
40221 Düsseldorf, Germany
Tel.: +49 211/44708-100



Frankfurt am Main

Thurn-und-Taxis-Platz 6
60313 Frankfurt am Main, Germany
Tel.: +49 69/989728-100



Weißenfels

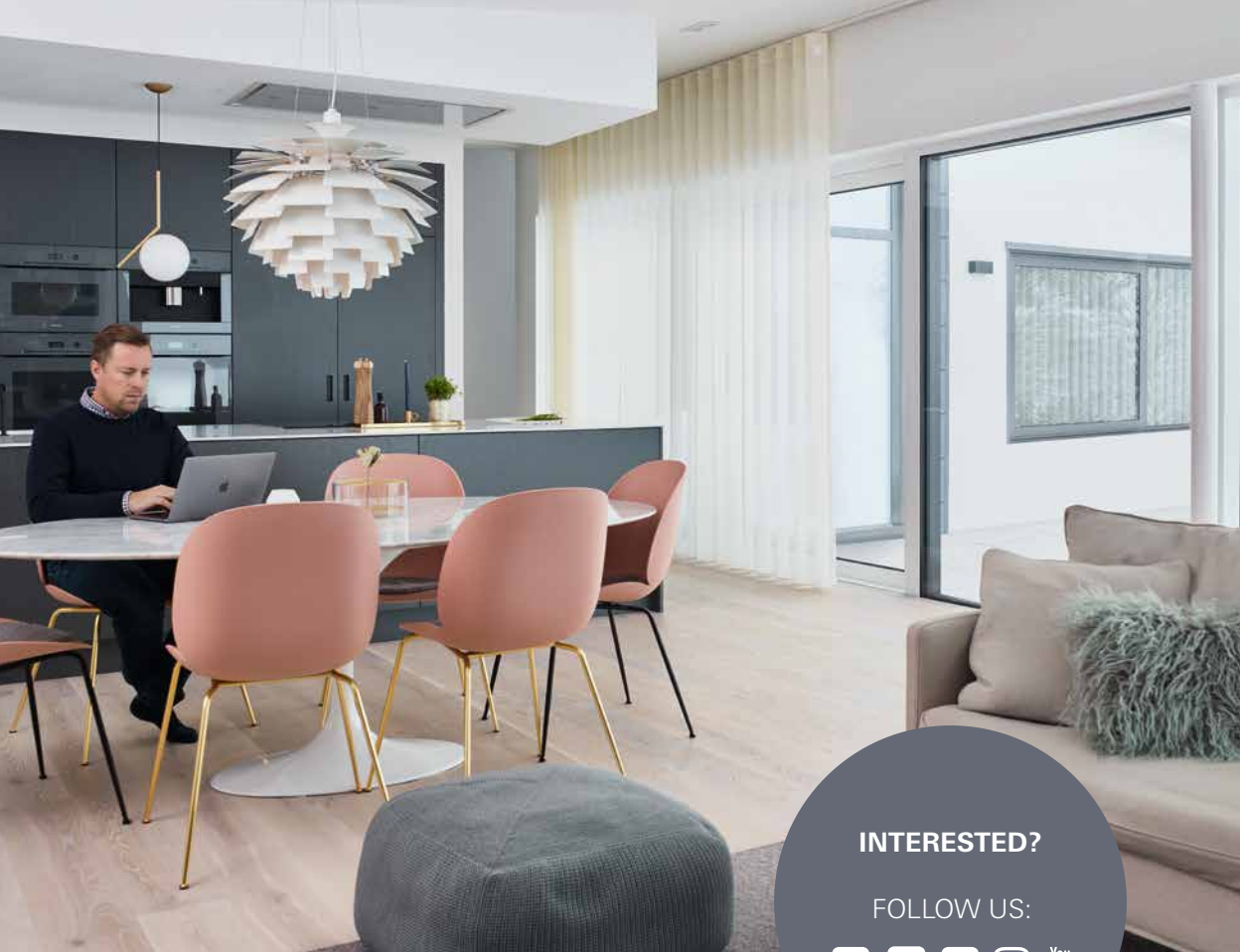
Selauer Str. 155
06667 Weißenfels, Germany
Tel.: +49 3443/342-0



Wertingen

Industriestraße 12
86637 Wertingen, Germany
Tel.: +49 8272/87-0

One exhibit often says more than a thousand images. Personal and expert advice is essential when it comes to the design of your project. So go ahead and experience the Schüco product range for yourself in our showrooms. Steal a first glimpse at the showrooms, and find out opening times and contact addresses from our website www.schueco.com/showrooms



INTERESTED?

FOLLOW US:



We're here to help.



Use our service hotline:
+49 800 400 400 7



Write to us:
view@schueco.com



Visit one of our showrooms:
www.schueco.com/showrooms



Would you like a brochure?
www.schueco.com/downloads



SCHÜCO